

Anti-ABCC5 antibody

Cat. No.	ml160617
Package	25 µl/100 µl/200 µl
Storage	-20°C, pH7.4 PBS, 0.05% NaN ₃ , 40% Glycerol

Product overview

Description	Anti-ABCC5 rabbit polyclonal antibody
Applications	ELISA, WB, IHC
Immunogen	Synthetic peptide of human ABCC5
Reactivity	Human, Mouse, Rat
Content	0.5 mg/ml
Host species	Rabbit
Ig class	Immunogen-specific rabbit IgG
Purification	Antigen affinity purification

Target information

Symbol	ABCC5
Full name	ATP-binding cassette, sub-family C
Synonyms	MRP5, SMRP, ABC33, MOATC, MOAT-C, pABC11, EST277145
Swissprot	O15440

Target Background

The protein encoded by this gene is a member of the superfamily of ATP-binding cassette (ABC) transporters. ABC proteins transport various molecules across extra- and intra-cellular membranes. ABC genes are divided into seven distinct subfamilies (ABC1, MDR/TAP, MRP, ALD, OABP, GCN20, White). This protein is a member of the MRP subfamily which is involved in multi-drug resistance. This protein functions in the cellular export of its substrate, cyclic nucleotides. This export contributes to the degradation of phosphodiesterases and possibly an elimination pathway for cyclic nucleotides. Studies show that this protein provides resistance to thiopurine anticancer drugs, 6-mercaptopurine and thioguanine, and the anti-HIV drug 9-(2-phosphonylmethoxyethyl)adenine. This protein may be involved in resistance to thiopurines in acute lymphoblastic leukemia and antiretroviral nucleoside analogs in HIV-infected patients. Alternative splicing of this gene has been detected; however, the complete sequence and translation initiation site is unclear.

订购热线: 4008-898-798

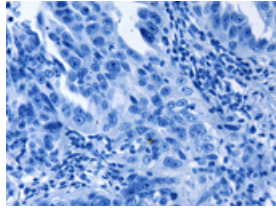
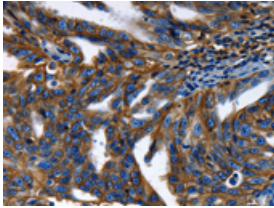
Applications

Immunohistochemistry

Predicted cell location: Cytoplasm, Cell membrane

Positive control: Human ovarian cancer

Recommended dilution: 50-200

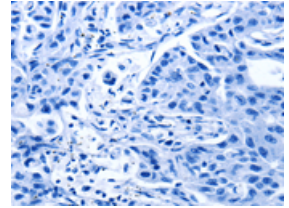
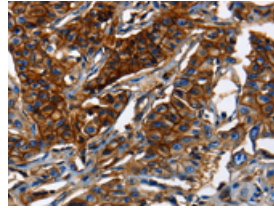


The image on the left is immunohistochemistry of paraffin-embedded Human ovarian cancer tissue using ml160617(ABCC5 Antibody) at dilution 1/50, on the right is treated with synthetic peptide. (Original magnification: $\times 200$)

Predicted cell location: Cytoplasm, Cell membrane

Positive control: Human lung cancer

Recommended dilution: 50-200



The image on the left is immunohistochemistry of paraffin-embedded Human lung cancer tissue using ml160617(ABCC5 Antibody) at dilution 1/50, on the right is treated with synthetic peptide. (Original magnification: $\times 200$)

Western blotting

Predicted band size: 161 kDa

Positive control: Mouse heart tissue

Recommended dilution: 1000-5000

Gel: 10% SDS-PAGE

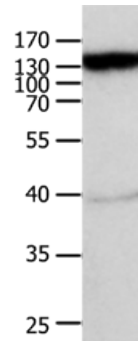
Lysate: 40 μ g

Lane: Mouse heart tissue

Primary antibody: ml160617(ABCC5 Antibody) at dilution 1/950

Secondary antibody: Goat anti rabbit IgG at 1/8000 dilution

Exposure time: 10 minutes



ELISA

Recommended dilution: 2000-10000

联系电话: 4008-898-798, 021-61725725

联系QQ: 2881505695, 2881505696

邮箱: mlbio_cn@yeah.net

网址: www.mlbio.cn