

Anti-DKKL1 antibody

Cat. No.	ml120555
Package	25 µl/100 µl/200 µl
Storage	-20°C, pH7.4 PBS, 0.05% NaN ₃ , 40% Glycerol

Product overview

Description	Anti-DKKL1 rabbit polyclonal antibody
Applications	ELISA, WB
Immunogen	Fusion protein of human DKKL1
Reactivity	Human, Mouse
Content	0.6 mg/ml
Host species	Rabbit
Ig class	Immunogen-specific rabbit IgG
Purification	Antigen affinity purification

Target information

Symbol	DKKL1
Full name	dickkopf like acrosomal protein 1
Synonyms	SGY; CT34; SGY1; SGY-1
Swissprot	Q9QZL9

Target Background

The dickkopf protein family interacts with the Wnt signaling pathway and its members are characterized by two conserved cysteine-rich domains. This gene encodes a secreted protein that has low sequence similarity to the dickkopf-3 protein. Multiple alternatively spliced transcript variants encoding distinct isoforms have been found for this gene.

订购热线: 4008-898-798

Applications

Western blotting

Predicted band size: 27 kDa

Positive control: Mouse testis tissue lysate

Recommended dilution: 200-1000

Gel: 8%SDS-PAGE

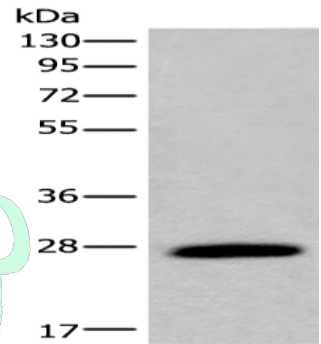
Lysate: 40 µg

Lane: Mouse testis tissue lysate

Primary antibody: ml120555(DKKL1 Antibody) at dilution 1/200

Secondary antibody: Goat anti rabbit IgG at 1/8000 dilution

Exposure time: 1 second



ELISA

Recommended dilution: 5000-10000

联系电话: 4008-898-798, 021-61725725

联系QQ: 2881505695, 2881505696

邮箱: mlbio_cn@yeah.net

网址: www.mlbio.cn