

Anti-RIC3 antibody

Cat. No.	ml225809
Package	25 µl/100 µl/200 µl
Storage	-20°C, pH7.4 PBS, 0.05% NaN ₃ , 40% Glycerol

Product overview

Description	Anti-RIC3 rabbit polyclonal antibody
Applications	ELISA, IHC
Immunogen	Fusion protein of human RIC3
Reactivity	Human, Mouse
Content	0.96 mg/ml
Host species	Rabbit
Ig class	Immunogen-specific rabbit IgG
Purification	Antigen affinity purification

Target information

Symbol	RIC3
Full name	RIC3 acetylcholine receptor chaperone
Synonyms	AYST720; PRO1385
Swissprot	Q7Z5B4

Target Background

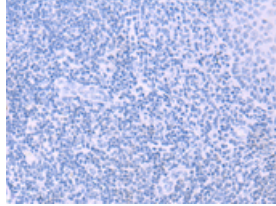
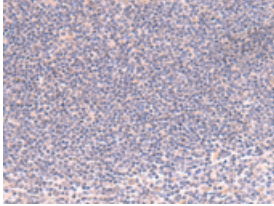
This gene encodes a member of the resistance to inhibitors of cholinesterase 3-like family which functions as a chaperone of specific 5-hydroxytryptamine type 3 receptor and nicotinic acetylcholine receptor subtypes. The encoded protein influences the folding and assembly of these receptor subunits in the endoplasmic reticulum and expression on the cell surface. This protein contains an N-terminal transmembrane domain, a proline-rich spacer, and a cytosolic C-terminal coiled-coil domain. Alternative splicing results in multiple transcript variants.

订购热线: 4008-898-798

Applications

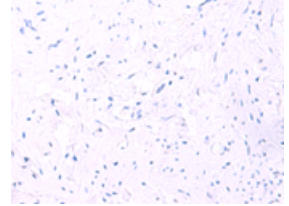
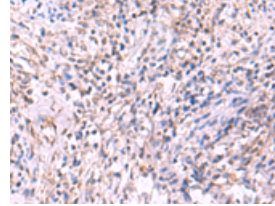
Immunohistochemistry

Predicted cell location: Cytoplasm
Positive control: Human tonsil
Recommended dilution: 50-300



The image on the left is immunohistochemistry of paraffin-embedded Human tonsil tissue using ml225809(RIC3 Antibody) at dilution 1/55, on the right is treated with fusion protein. (Original magnification: ×200)

Predicted cell location: Cytoplasm
Positive control: Human cervical cancer
Recommended dilution: 50-300



The image on the left is immunohistochemistry of paraffin-embedded Human cervical cancer tissue using ml225809(RIC3 Antibody) at dilution 1/55, on the right is treated with fusion protein. (Original magnification: ×200)

ELISA

Recommended dilution: 5000-10000

联系电话: 4008-898-798, 021-61725725

联系QQ: 2881505695, 2881505696

邮箱: mlbio_cn@yeah.net

网址: www.mlbio.cn