

Anti-PHTF1 antibody

Cat. No.	ml225468
Package	25 µl/100 µl/200 µl
Storage	-20°C, pH7.4 PBS, 0.05% NaN ₃ , 40% Glycerol

Product overview

Description	Anti-PHTF1 rabbit polyclonal antibody
Applications	ELISA, IHC
Immunogen	Fusion protein of human PHTF1
Reactivity	Human, Mouse
Content	0.66 mg/ml
Host species	Rabbit
Ig class	Immunogen-specific rabbit IgG
Purification	Antigen affinity purification

Target information

Symbol	PHTF1
Full name	putative homeodomain transcription factor 1
Synonyms	PHTF
Swissprot	Q9UMS5

Target Background

PHTF1 (putative homeodomain transcription factor 1), also known as PHTF, is a potential transcription regulator. It is a ubiquitously expressed integral, multipass membrane protein with predominant expression in testis. PHTF1 is associated with the ER (endoplasmic reticulum) and contains one bHLH (basic helix-loop-helix) domain. It is present in the cell during meiosis and spermiogenesis but, by the end of spermiogenesis, is released from the mature cell within the residual bodies. This implies that PHTF1 may play a role in the spermatozoa maturation process. In addition, PHTF1 is believed to interact with FEM1B and may be responsible for recruiting FEM1B to the surface of the ER membrane. This suggests that PHTF1 acts as a sequestering or anchoring protein for FEM1B. Two PHTF1 isoforms exist due to alternate splicing events. Isoform 2 is the shorter form and lacks the amino acid residues 648 to 762.

订购热线: 4008-898-798

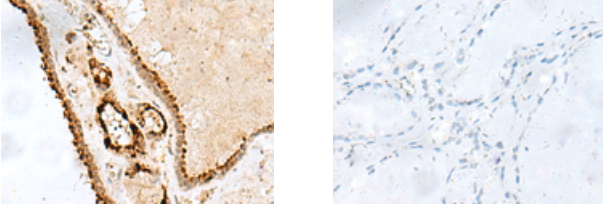
Applications

Immunohistochemistry

Predicted cell location: Nucleus

Positive control: Human thyroid cancer

Recommended dilution: 20-100



The image on the left is immunohistochemistry of paraffin-embedded Human thyroid cancer tissue using ml225468(PHTF1 Antibody) at dilution 1/40, on the right is treated with fusion protein. (Original magnification: $\times 200$)

ELISA

Recommended dilution: 5000-10000

联系电话: 4008-898-798, 021-61725725

联系QQ: 2881505695, 2881505696

邮箱: mlbio_cn@yeah.net

网址: www.mlbio.cn