

Anti-SAXO2 antibody

Cat. No. ml163873
Package 25 µl/100 µl/200 µl
Storage -20°C, pH7.4 PBS, 0.05% NaN₃, 40% Glycerol

Product overview

Description Anti-SAXO2 rabbit polyclonal antibody
Applications ELISA, IHC
Immunogen Synthetic peptide of human SAXO2
Reactivity Human, Mouse
Content 1.2 mg/ml
Host species Rabbit
Ig class Immunogen-specific rabbit IgG
Purification Antigen affinity purification

Target information

Symbol SAXO2
Full name stabilizer of axonemal microtubules 2
Synonyms FAM154B
Swissprot Q658L1

Target Background

The function of this protein remains unknown.

订购热线: 4008-898-798

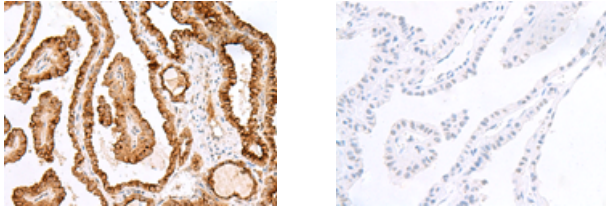
Applications

Immunohistochemistry

Predicted cell location: Cell membrane

Positive control: Human thyroid cancer

Recommended dilution: 40-200



The image on the left is immunohistochemistry of paraffin-embedded Human thyroid cancer tissue using ml163873(SAXO2 Antibody) at dilution 1/40, on the right is treated with synthetic peptide. (Original magnification: $\times 200$)

ELISA

Recommended dilution: 5000-10000

联系电话: 4008-898-798, 021-61725725

联系QQ: 2881505695, 2881505696

邮箱: mlbio_cn@yeah.net

网址: www.mlbio.cn